

# Pragma Fortress SSH Client Suite

2-Factor Authentication & Encrypted Connectivity from Windows

## Pragma Systems Fortress SSH Client Suite

Pragma Fortress SSH Client Suite contains industrial grade Windows SSH/SFTP/SCP graphical & command line clients for encrypting and connecting to highly secure environments like Cisco networking devices and enterprise servers running SSH. The clients support 2-factor authentication and are RFC 6187 compliant with full smart card support for intrusion protection and to combat cybersecurity threats posed for remote access.



### Pragma Fortress SSH Client Suite Features:

- **Flexible support for a broad range of server platforms** – Performs best with Pragma Fortress SSH Server, and is compatible with server software from other vendors on a variety of operating systems like Solaris, Linux, HP-UX, AIX, VMS and Macintosh
- **Broad Windows OS support** – Windows 2012 R2/2012/2008 R2/2008/2003 servers and Windows 10/8/7/Vista/XP and supports 32-bit & 64-bit processors
- **Supports port forwarding** – Enables secure transmission by any TCP/IP application by passing the data over a secure SSH session, with only minimal changes to the application required
- **Session logging** – Optionally logs session output to a text file (only includes printable ASCII characters)
- **Scripting** – Console clients use easy-to-write script files to automate logon & session operation
- **Handles multiple server configurations** – No need to reconfigure the client for each server used
- **Gateway capability** – Console clients can be used inside a telnet or SSH session to connect to another telnet or SSH server
- **Authentication** – Certificate, password, & Windows GSS-API Kerberos and NTLM Active Directory authentication

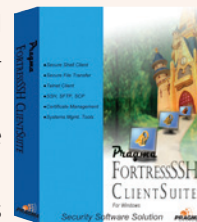
- **Encryption** – Supports multiple advanced encryption algorithms for optimal security: AES128, AES192, AES256, Blowfish, 3DES and FIPS certified Microsoft cryptographic modules
- **Customizable terminal window and fonts** – Dynamically resize the terminal window by changing the size properties of the console window

### Pragma Fortress SSH Client Benefits

- **Reliable and proven** – Years of engineering design and feedback from a multitude of users have perfected Pragma Fortress SSH Client Suite. Just install it, configure it to suit your preferences and you do not have to think about it again
- **Unparalleled performance** – Advanced algorithms deliver unmatched transfer speeds. When tested with Pragma Fortress SSH Server, our SSH client performed up to 45-60 times faster than a leading competitor's product
- **Excellent value** – Cost effective and full-featured commercial client software. While open source alternatives may not cost money up front, the extra time you will spend installing, maintaining and using them far outweighs any initial "cost savings"

### At A Glance

Pragma Fortress SSH Client Suite is a comprehensive collection of Windows client-side programs that give you secure access to files and data on remote computers. The suite also includes a variety of high-value programs and management tools to improve your productivity and simplify your remote access transactions. It provides all the client functionality needed to carry out easy, dependable, and fast communications using a wide variety of protocols, including:



- **2-factor authentication with CAC/PIV cards**
- **RFC 6187 compliant**
- **Graphical & Console SSH client**
- **GUI secure file transfer (SFTP) client**
- **Console SFTP & Secure Copy (SCP) client**
- **Remote exec (rexec) & Remote shell (rsh) client**

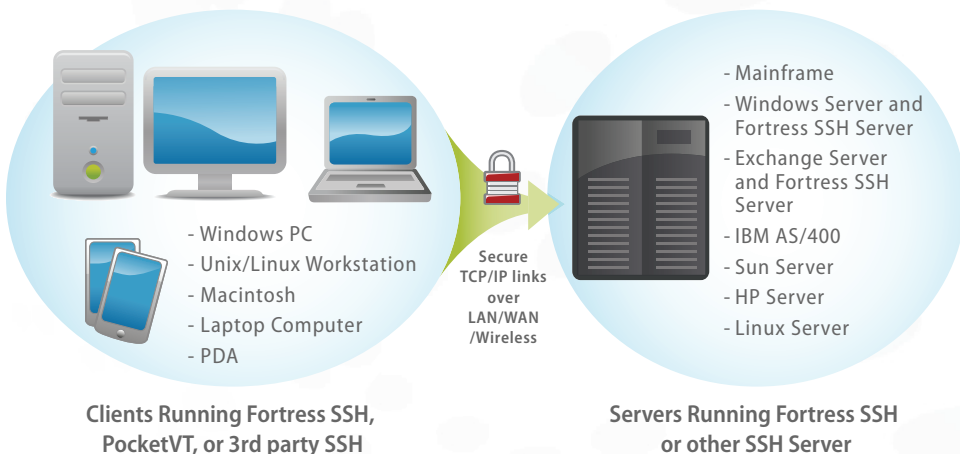
#### Benchmark Test

In benchmark tests against a leading competitor, Pragma Fortress SSH Server and SSH Client software performed 45-60 times faster!

File Size	Pragma SFTP/SSH	Leading Competitor
8.26 MB	1 sec	47 sec
41.32 MB	4 sec	4 min 45 sec
95.45MB	10 sec	10 min 54 sec

Actual test data

### Secure Connectivity with SSH Protocol



Pragma Fortress SSH Client Suite combines all of these capabilities into a single, full-featured package. It is easy to install and use and flexible to accommodate whatever protocol you need.



# Fortress SSH Client Suite

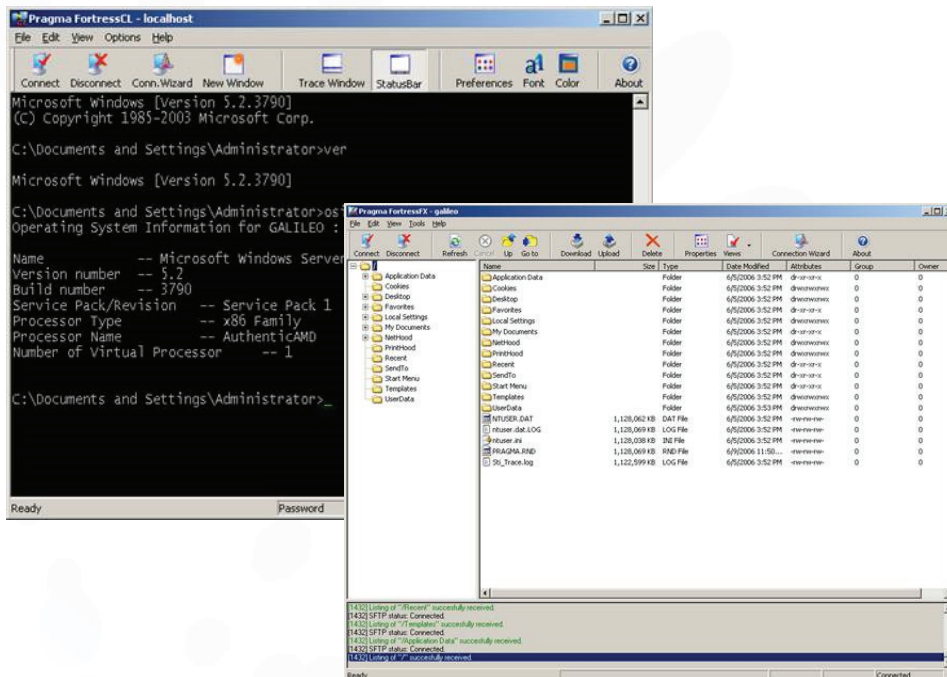
Anytime, anywhere connectivity  
for Windows environments.



## Essential Command Line Tools Included:

Pragma Fortress SSH Client Suite includes several programs that enable execution of essential management functions directly from the command line. These tools are useful on any system, whether you are using a client machine locally or remotely through a telnet or SSH session.

- Delete Directory Tree
- Find File
- Kill Active Process
- Get Operating System Information
- Password Changer Program
- Console Registry Editor
- Show Active Processes
- FTP Client
- Get Current User Name
- Fast File Text Viewer
- Which Executable
- Internet User Name Directory Service
- Change Computer Name
- Change Current Console Settings
- Shutdown Program
- Keyboard Tester
- Process Sleep
- Get Group Information
- Get User Information
- RunAs



## Specifications

- RFC 6187 compliant supporting 2-factor authentication
- AES128, 192, 256, Blowfish, 3DES, FIPS certified Microsoft cryptographic modules
- Minimum Windows systems requirements for hardware and memory is sufficient for the Fortress SSH Client Suite. A minimum of 128 MB of memory is recommended
- 5 MB available hard disk space
- Runs in Windows 2012 R2/2012/2008 R2/2008/2003 servers and Windows 10/8/7/Vista/XP
- 32-bit & 64-bit

**Microsoft®**  
**GOLD CERTIFIED**

*Partner*

## How to Order

Visit Pragma's web site at:  
<http://www.pragmasys.com> to order  
online or to download a FREE fully  
functional evaluation copy.

To order from USA call: 1-800-224-1675

International sales call: 1-512-219-7270

Fax orders to: 1-512-219-7110

Contact Pragma for pricing and quantity discount information.

### Pragma Systems, Inc.

13809 Research Blvd., Suite 675  
Austin, TX 78750  
USA

Tel: 1-512-219-7270

Fax: 1-512-219-7110

Email: [sales@pragmasys.com](mailto:sales@pragmasys.com)

Website: <http://www.pragmasys.com>

Copyright © 2016 Pragma Systems, Inc. All Rights Reserved.

# Pragma Fortress SSH Client Suite

2-Factor Authentication & Encrypted Connectivity from Windows